



UNLG Series is GEL battery which is manufactured with AGM separator and colloidal Silicon. Gel battery are featured with low self-discharge, strong ability to recover from deep discharging, excellent cycle life and performance at cold ambient temperatures than conventional VRLA

Battery Construction

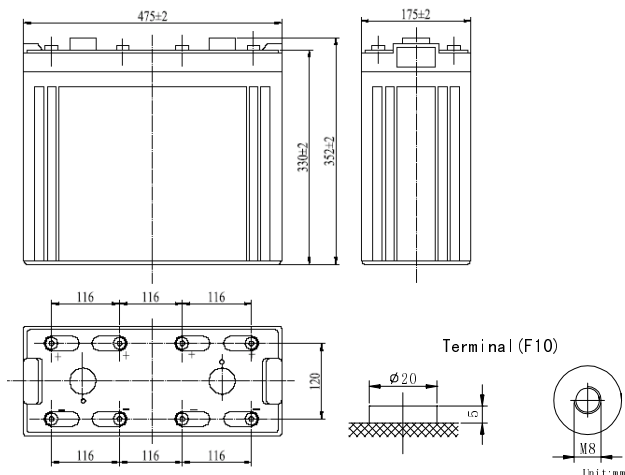
Component	Positive plate	Negative plate	Container	Cover	Safety valve	Terminal	Separator	Electrolyte
Raw material	Lead dioxide	Lead	ABS	ABS	Rubber	Copper	Fiberglass	Colloidal silicon

General Feature

- Micro millimeter SiO₂ and H₂SO₄ technology for Efficient gas recombination of up to 99% and Freedom from electrolyte maintenance or water adding.
- Not restricted for air transport-complies with IATA/ICAO Special Provision A67.
- UL-recognized component.
- Can be mounted in any orientation.
- Computer designed lead, calcium tin alloy grid for high power density.
- Long service life, float or cyclic applications.
- Maintenance-free operation.
- Low self discharge.

SPECIFICATION

Nominal voltage 2V
 Number of cell 1
 Length(mm/inch) 475/18.7
 Width(mm/inch) 175/6.89
 Height(mm/inch) 330/13.0
 Total Height(mm/inch) 367/14.45
 Approx. Weight (kg/lbs) 62/136.7



Total height with removable cover: 367

Performance Characteristics

Capacity 77°F(25°C)	100 hour rate (12A、1.85V)	1200Ah
	20 hour rate (52.5A、1.8V)	1050Ah
	10 hour rate (100A、1.8V)	1000Ah
	1 hour rate (600A、1.6V)	600Ah
Internal Resistance	Full charged Battery 77°F(25°C): 0.6mΩ	
Operating Temperature Range	Discharge: -20~60°C	
	Charge: -10~60°C	
	Storage: -20~60°C	
Self-Discharge 3% of capacity declined per month at 20°C(average)		
Max. discharge current 77°F(25°C): 3000A(5S)		
Charge (Constant Voltage)	Float: 2.23~2.28 V/77° F(25°C)	
	Cycle: 2.38~2.42 V/77°F(25°C) Max. Current: 200A	

Discharge Constant Current (Amperes at 77° F 25 °C)

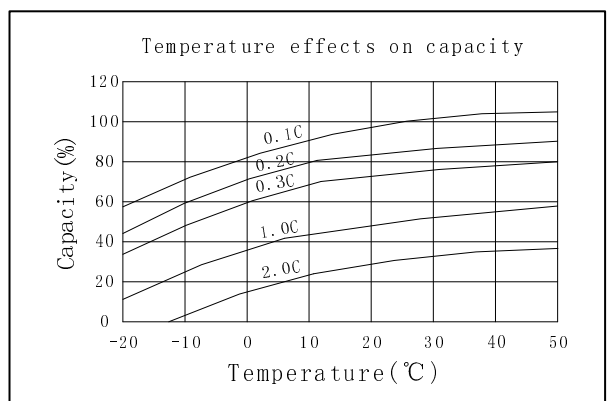
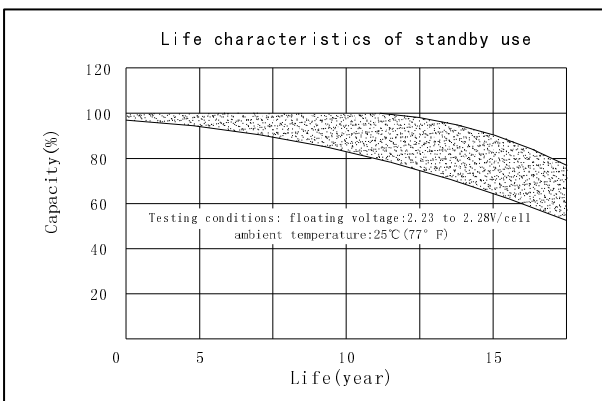
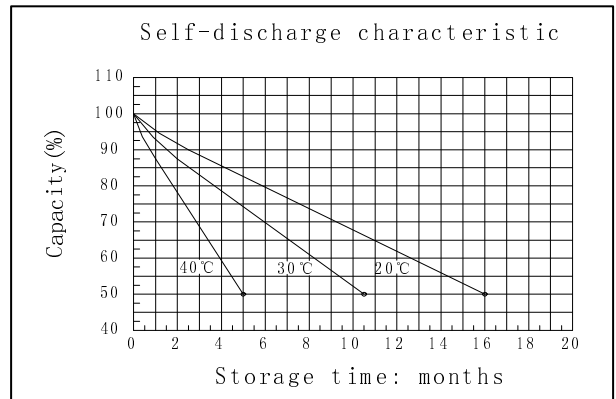
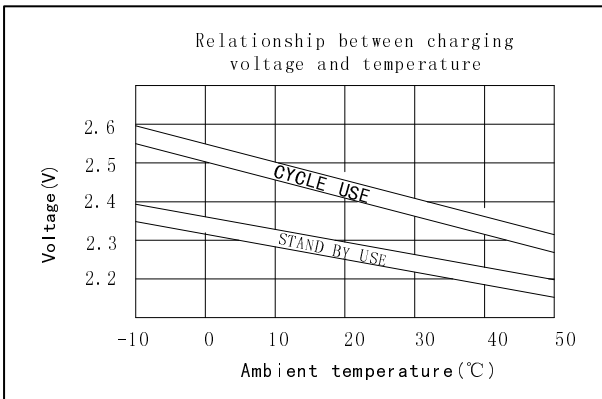
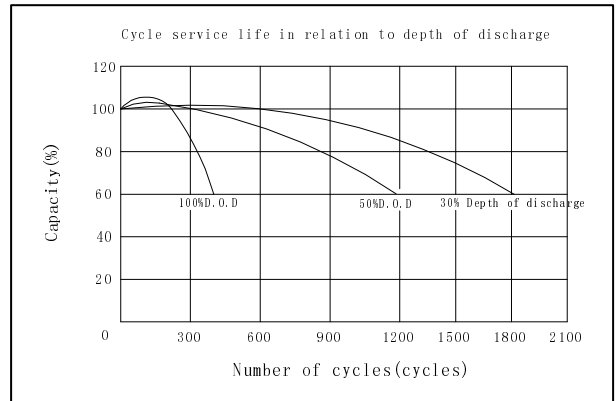
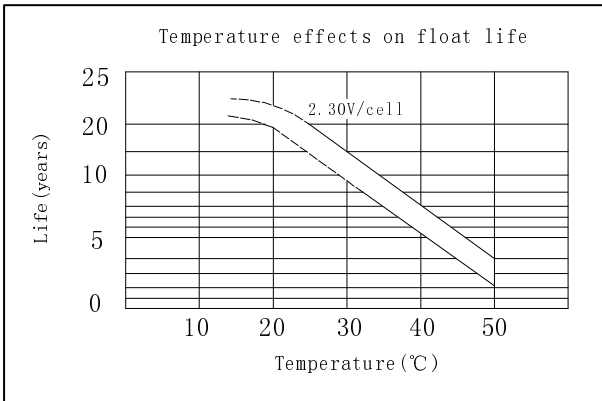
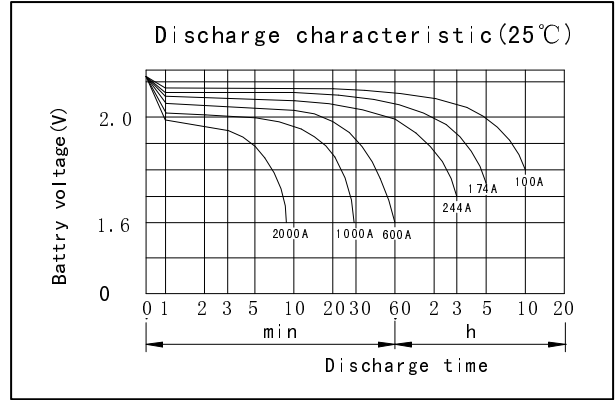
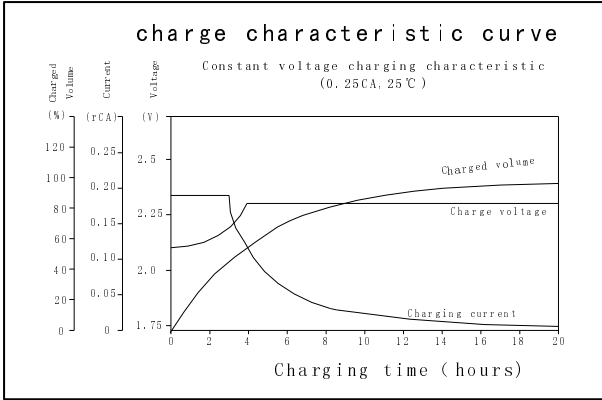
End Point Volts/Cell	5min	10min	15min	30min	45min	1h	3h	5h	10h
1.60V		1740	1320	1007	725	600	252	188	106
1.65V		1645	1255	962	696	584	248	184	105
1.70V		1550	1189	916	665	565	244	179	104
1.75V		1457	1123	870	634	538	241	174	102
1.80V		1363	1055	820	600	519	236	168	100

Discharge Constant Power (watts at 77° F 25 °C)

End Point Volts/Cell	5min	10min	15min	30min	45min	1h	2h	3h	5h
1.60V		2787	2276	1714	1292	1069	691	506	353
1.65V		2625	2153	1627	1233	1024	673	492	347
1.70V		2463	2029	1540	1171	977	660	482	341
1.75V		2300	1903	1451	1108	928	649	473	334
1.80V		2139	1777	1360	1044	878	635	462	328

(Note) The above characteristics data are average values obtained

Within three charge/discharge cycles not the minimum values.



OREMA POWER CO., LTD

Add: Datang Industry Park Xinfeng Ganzhou City, Jiangxi Province, China

TEL: +86-0797-2299669 +86-0797- 2299553

FAX: +86-0797-2299553



ISO9001:2000

MH29838

C4M20412-3881-E-16

www.oremabattery.com